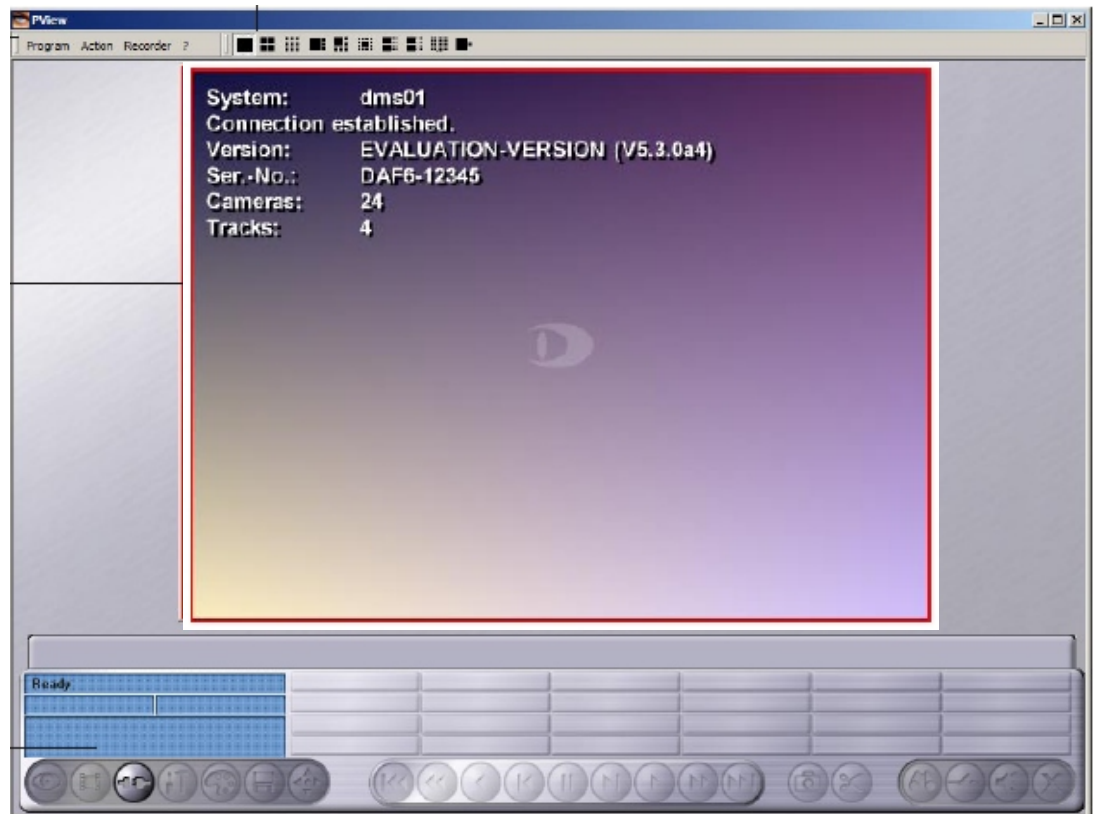
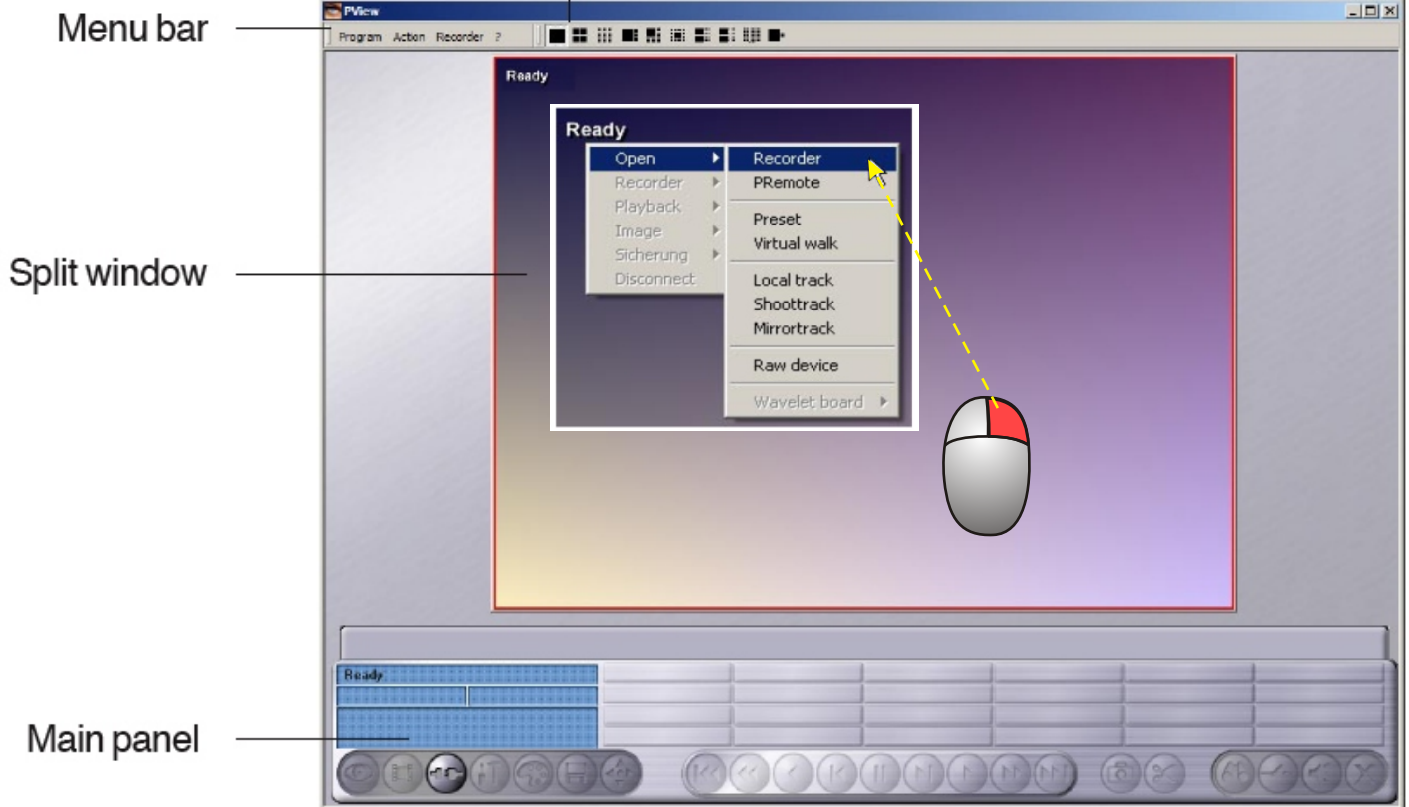


# WORKING WITH DALLMEIER PVIEW - QUICK TUTORIAL

Split selection

(Refers to versions 5.5.4 and later)



If a successful connection has been established, DVR details such as shown above will be shown.

If a connection to a recorder has been established in a split, some functions are activated in the main panel.

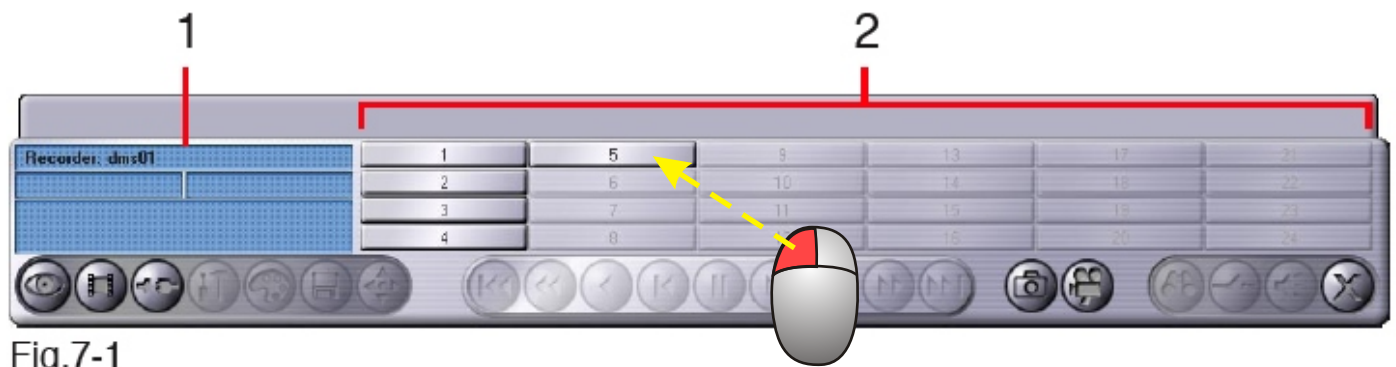


Fig.7-1

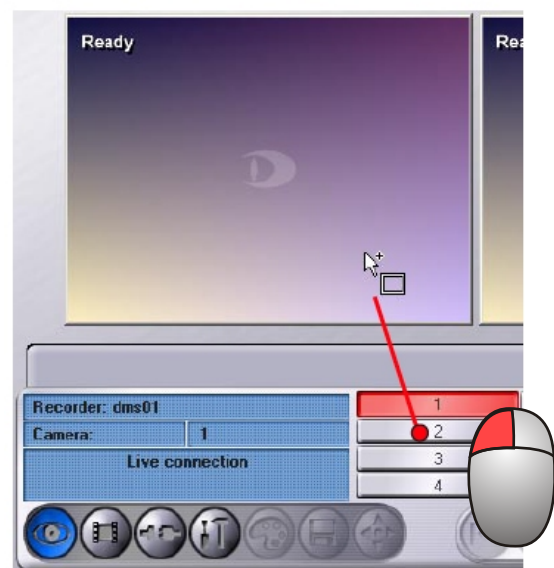
The information box (1) contains the name of the recorder.

In addition the available cameras selected on the recorder will be displayed in the camera list (2) on the main panel.

➤ Click on a camera entry in the camera list (2).

The live picture from the relevant camera will be displayed in the active split.

You can also connect and populate split screens by drag and drop.



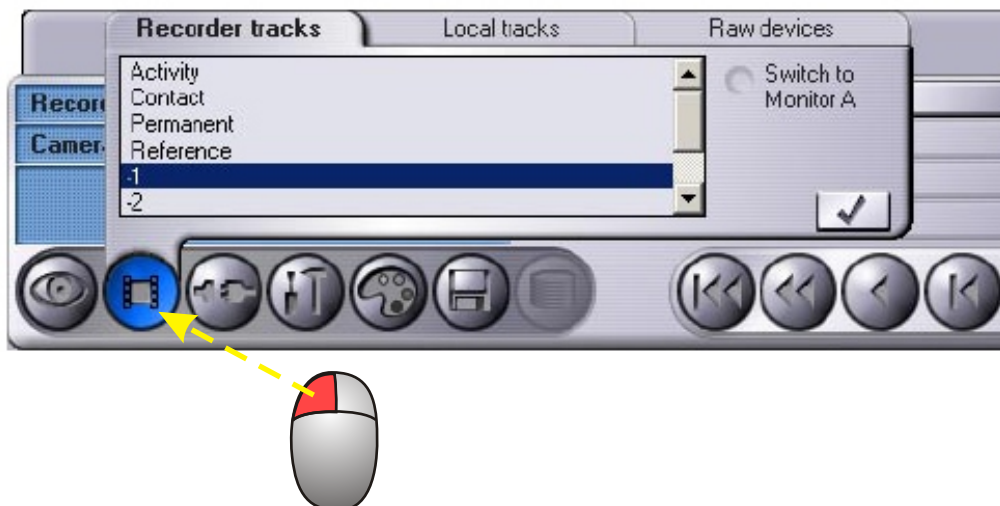
The camera picture is supplemented by several entries.

- Name of recorder connection.
- Number of the camera: Camera name.
- Live means that the current pictures from the camera are display in PView.
- Recorder date, recorder time.

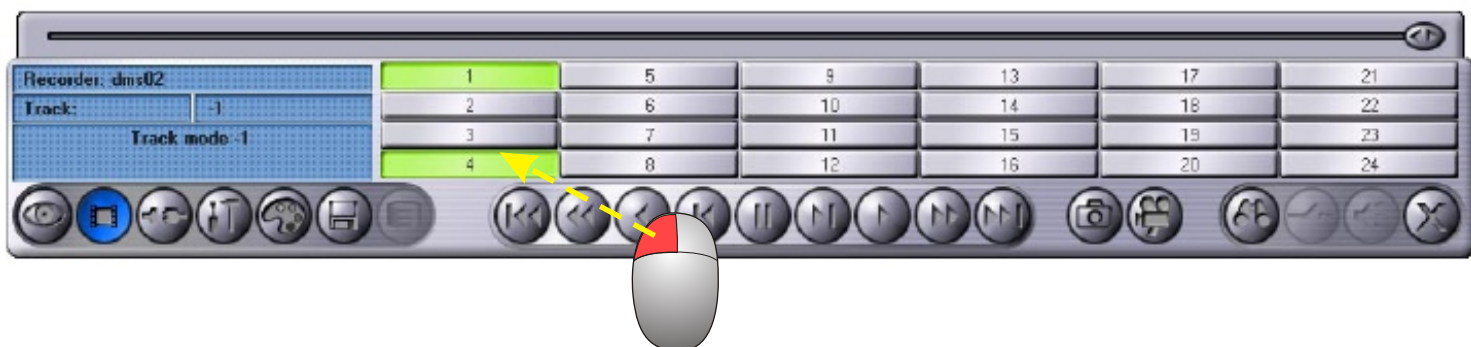
# Open recorder track

To open and view recorded tracks on a recorder using PView, there must be a connection to the relevant recorder.

➤ Click on *Select track*.

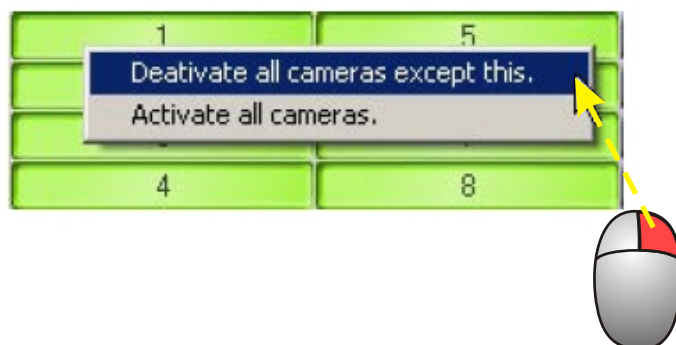


- ❑ For recorder tracks, only those cameras that have been defined on the recorder to record on this track will be displayed.



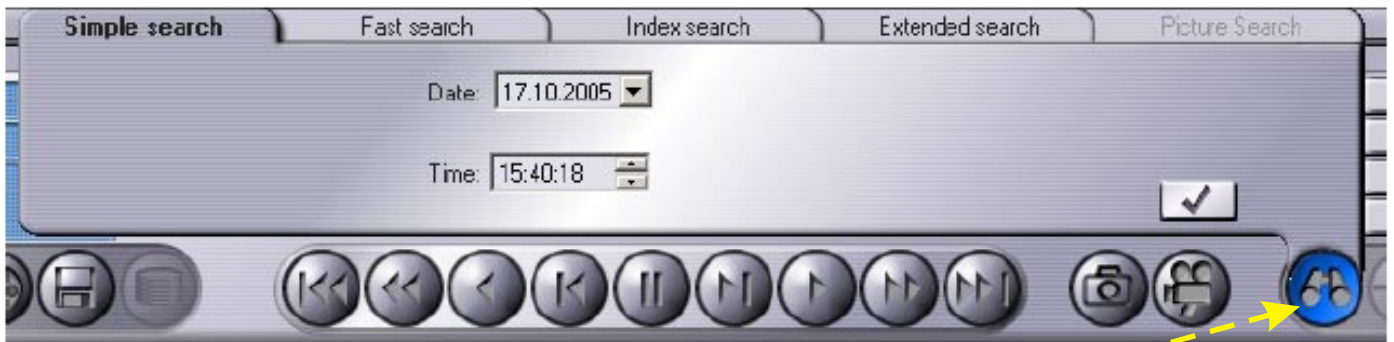
To filter out cameras that are of no interest during playback, deselect the green button of the unwanted cameras.

If there are more cameras to deselect a quicker way is by right-mouse clicking on the wanted camera.



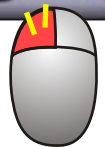
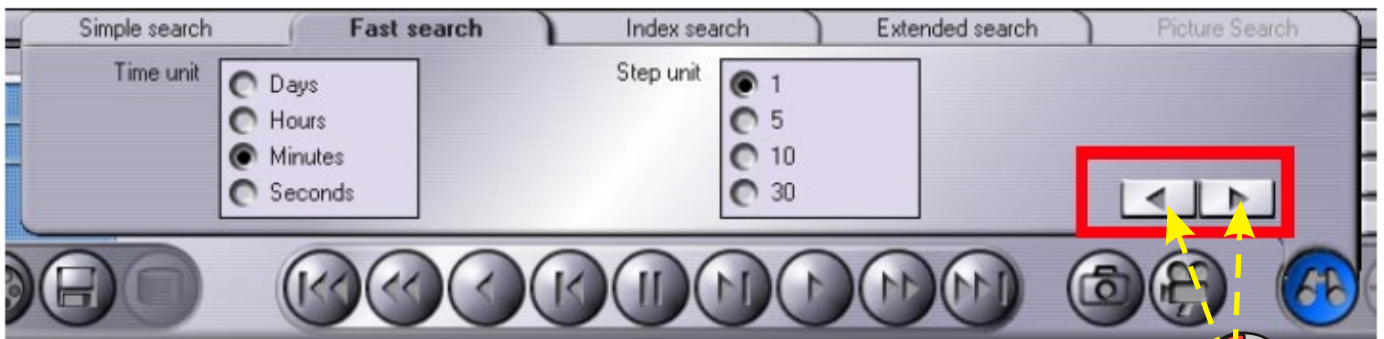
## Simple search

- Click on *Search* on the main panel.
- Open the **Simple search** tab.



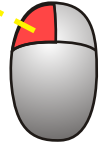
## Fast search

- Click on *Search* on the main panel.
- Click on the **Fast search** tab.



# Create backup

- Open the track for which you wish to create a backup in a split window.
- Select the menu entry **Action > Create backup** or on the *Create backup* button in the main panel.



|                    |  |  |                                  |                                |                                |
|--------------------|--|--|----------------------------------|--------------------------------|--------------------------------|
|                    |  |  | Track start: 18.10.2005 10:39:21 | Track end: 18.10.2005 14:41:46 | Free disk space: -             |
|                    |  |  | Start time: 18.10.2005 10:39:21  | End time: 18.10.2005 14:41:46  | Max. memory required: 556.5 MB |
| Backup filename: - |  |  | No split                         |                                |                                |

## Set start time

- Select the first picture for your backup using the playback functions.
- Click the *Start time* button.
- Click **Current**.
- Click **OK**.



**Set start time** [X]

Date: 18.10.2005 Time: 14:41:46 [Current]

[OK] [Cancel]

Fig. 14-3

## Set end time

- Select the last picture for your backup using the playback functions.
- Click *Stop time*.
- Click **Current**.
- Click **OK**.



**Set end time** [X]

Date: 18.10.2005 Time: 14:41:46 [Current]

[OK] [Cancel]

Fig. 14-4

## Set filters

Filters can also be set for the picture selection process for the backup. Click on the *Filter* button.



**Set filter criteria** [X]

Cameras

|    |    |    |
|----|----|----|
| 1  | 2  | 3  |
| 4  | 5  | 6  |
| 7  | 8  | 9  |
| 12 | 11 | 12 |
| 13 | 14 | 15 |
| 16 | 17 | 18 |
| 19 | 22 | 21 |
| 22 | 23 | 24 |

[All] [None]

Extended filter criteria

Kontaktkennung:

Referenzkennung:

Objektkoordinaten:

[OK] [Cancel]

In the **Set filter criteria** dialogue you can select individual cameras (not for standard tracks) or defined **Extended filter criteria**.

Confirm your selection by clicking on **OK**.

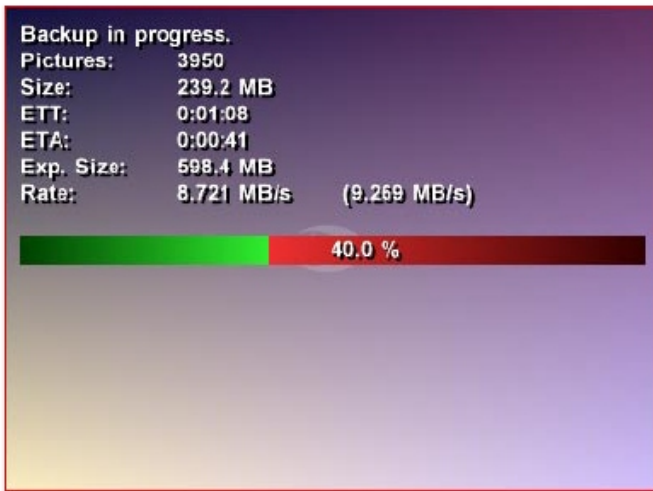
When all the criteria for the picture sequence you wish to back up have been defined, enter the folder name in which the backup file is to be saved on the hard drive.

- Click on the *Define destination folder* button.
- Select the destination directory in the dialogue that appears and enter a name for the backup file.



## Start backup

When you have completed all the selection criteria for the backup, you can start the process by clicking on the *Start backup* button.



The progress of the backup will be displayed in the split window, along with other information.

## View a backup track

- Make the selection in the **Action** menu or in the **Connect > Local track** context menu.

or

- Click on *Select track* on the main panel.
- Open the **Local tracks** tab.
- Select **Open track from hard disk**.



To playback backup (exported footage) on a PC that doesn't have PView installed (like Police) use ProcessViewer (it is available for download from the DVR)

